

1. If you have connected to CDStaff or CDStudent in the past, Go into WiFi network setting and forget those networks
2. Connect to CDSB WiFi (do not check Connect automatically)
3. If your Browser does not open automatically, Open your Web Browser and Navigate to <http://1.1.1.1> The following page will appear

AT&T 89% 9:28 AM

oudpath.cdschools.org

[Start Over](#) Powered by Ruckus



## Welcome to the Central Dauphin School District Network

 Access to the Central Dauphin School District network is restricted to authorized users and requires acceptance of the Terms & Conditions below.

Once authorized for access, your device will be configured with a unique certificate for network access.

 I agree to the [Terms & Conditions](#)

Make sure box is checked

Tap Start 

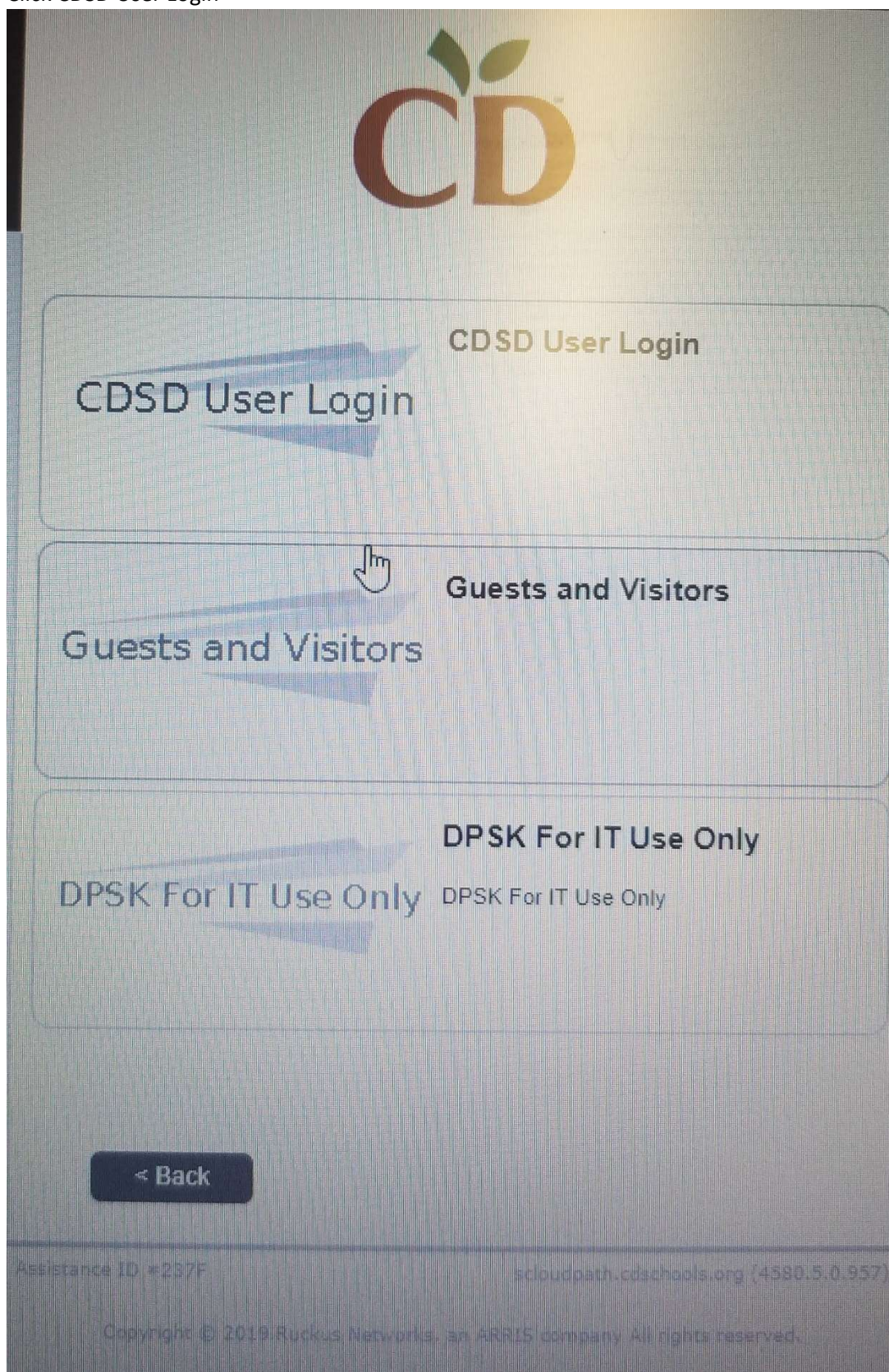
**Start**

Assistance ID #7637 scloudpath.cdschools.org (4580.5.0.957)

Copyright © 2019 Ruckus Networks, an ARRIS company All rights reserved.

4. Ensure the "I agree" box is checked and tap Start

5. Click CDSD User Login



## 6. Enter District Credentials

AT&amp;T

    88%  10:23 AM

oudpath.cdschools.org

[Start Over](#)

Powered by Ruckus



Your username and password are required to access the network.

Username:

Password:

&lt; Back

Continue &gt;

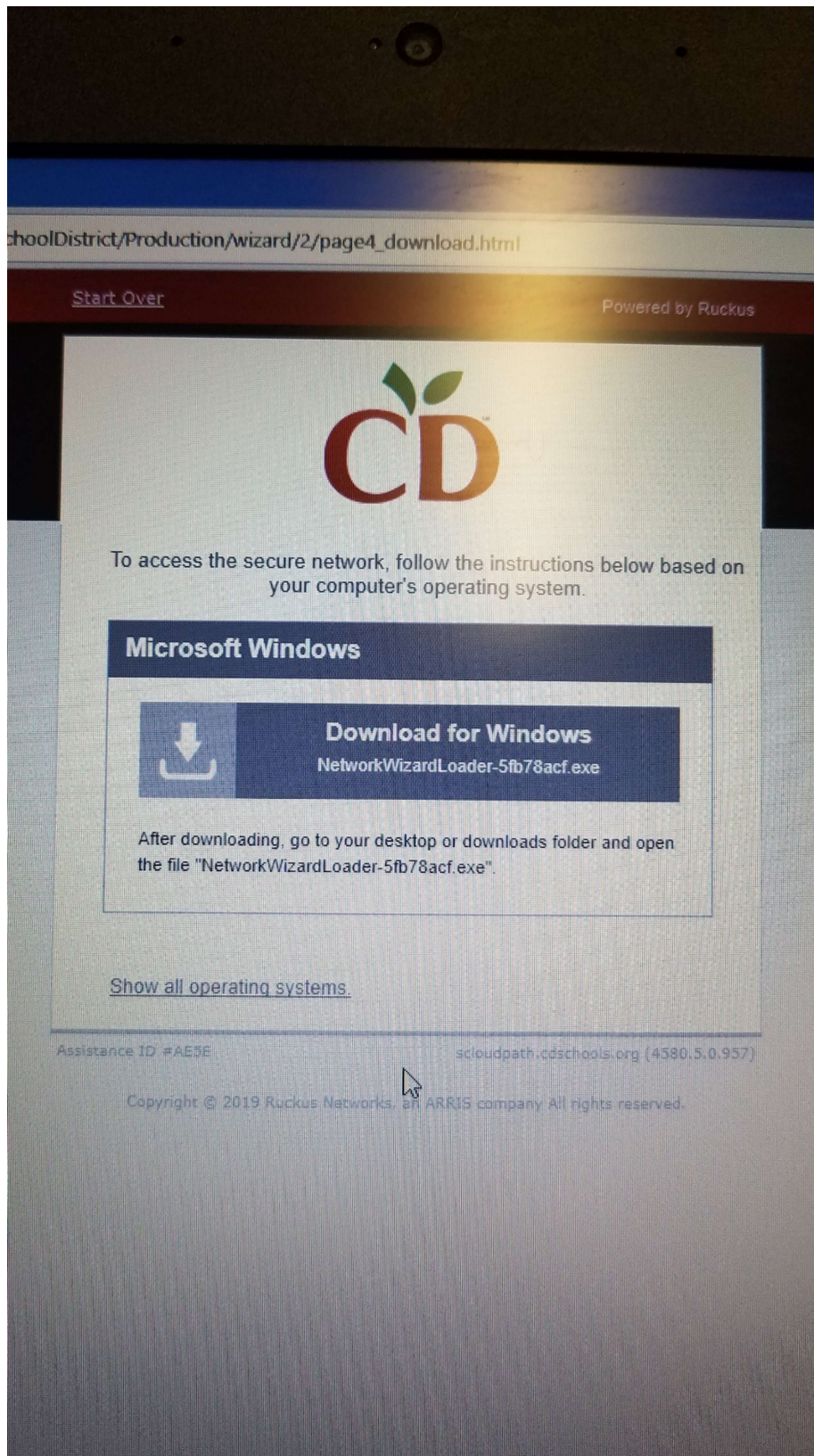
Assistance ID #1CED

scloudpath.cdschools.org (4580.5.0.957)

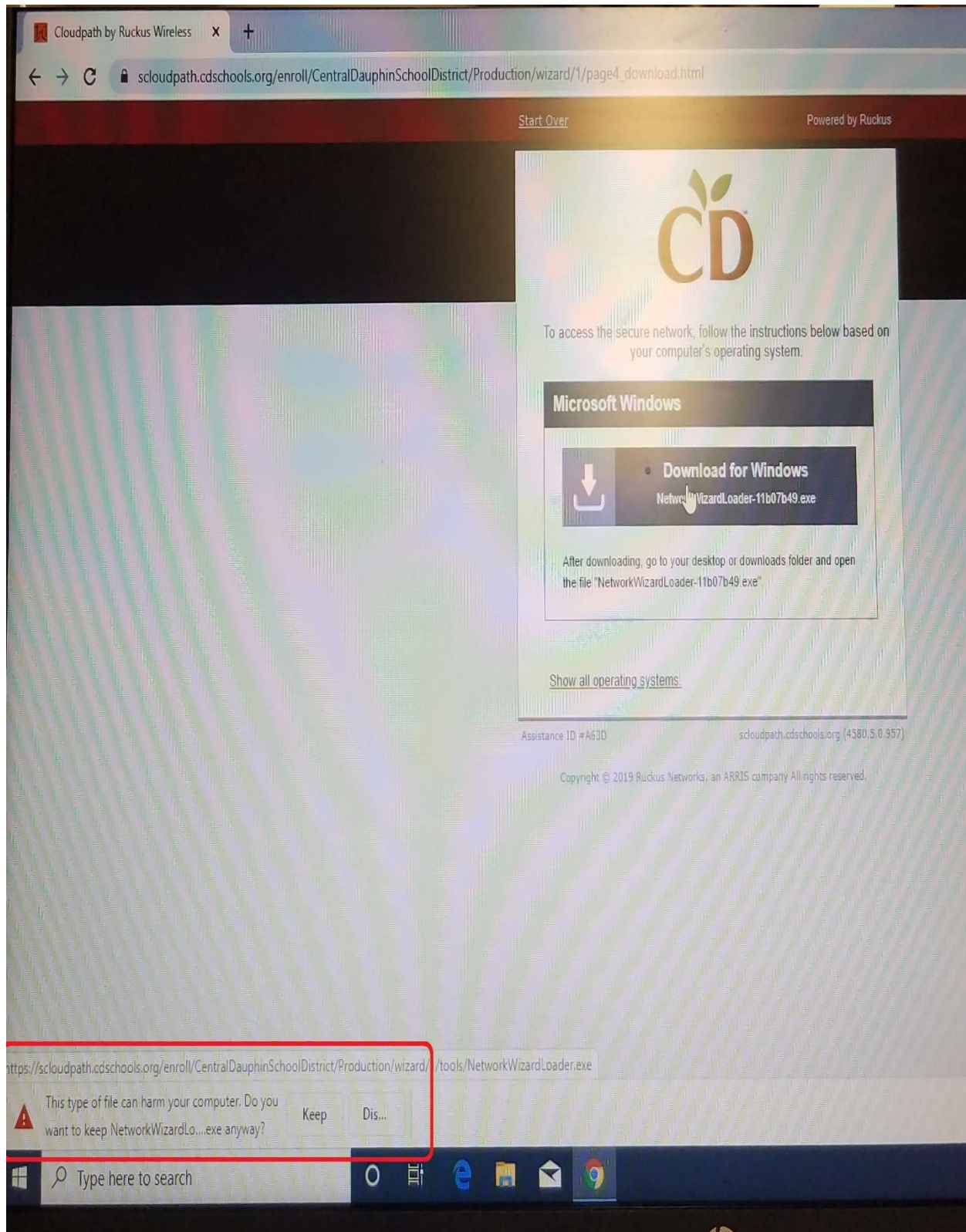
Copyright © 2019 Ruckus Networks, an ARRIS company All rights reserved.



## 7. Click Download for Windows

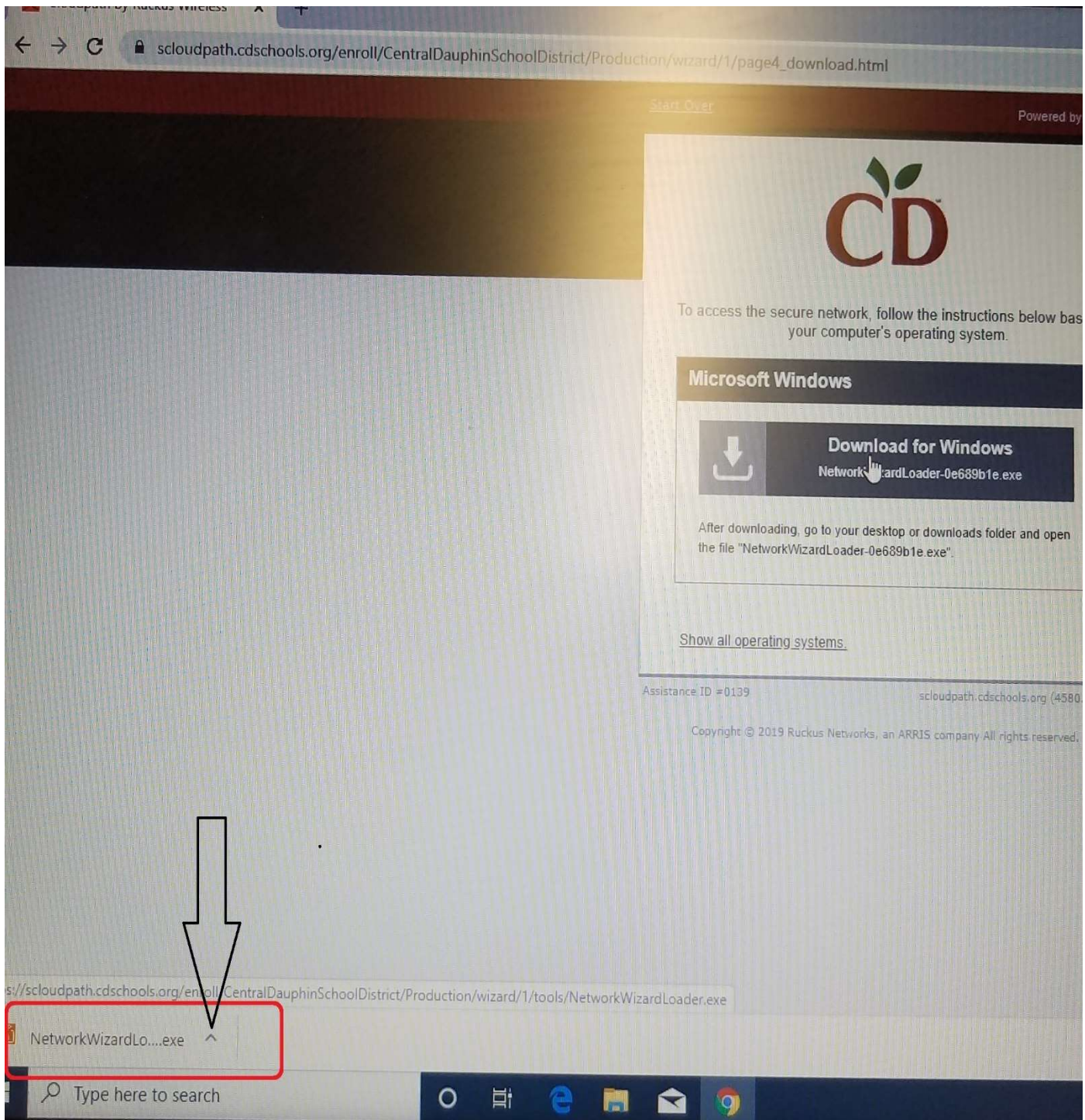


- If You receive a message at the bottom of your screen saying this file could harm your computer Click Keep



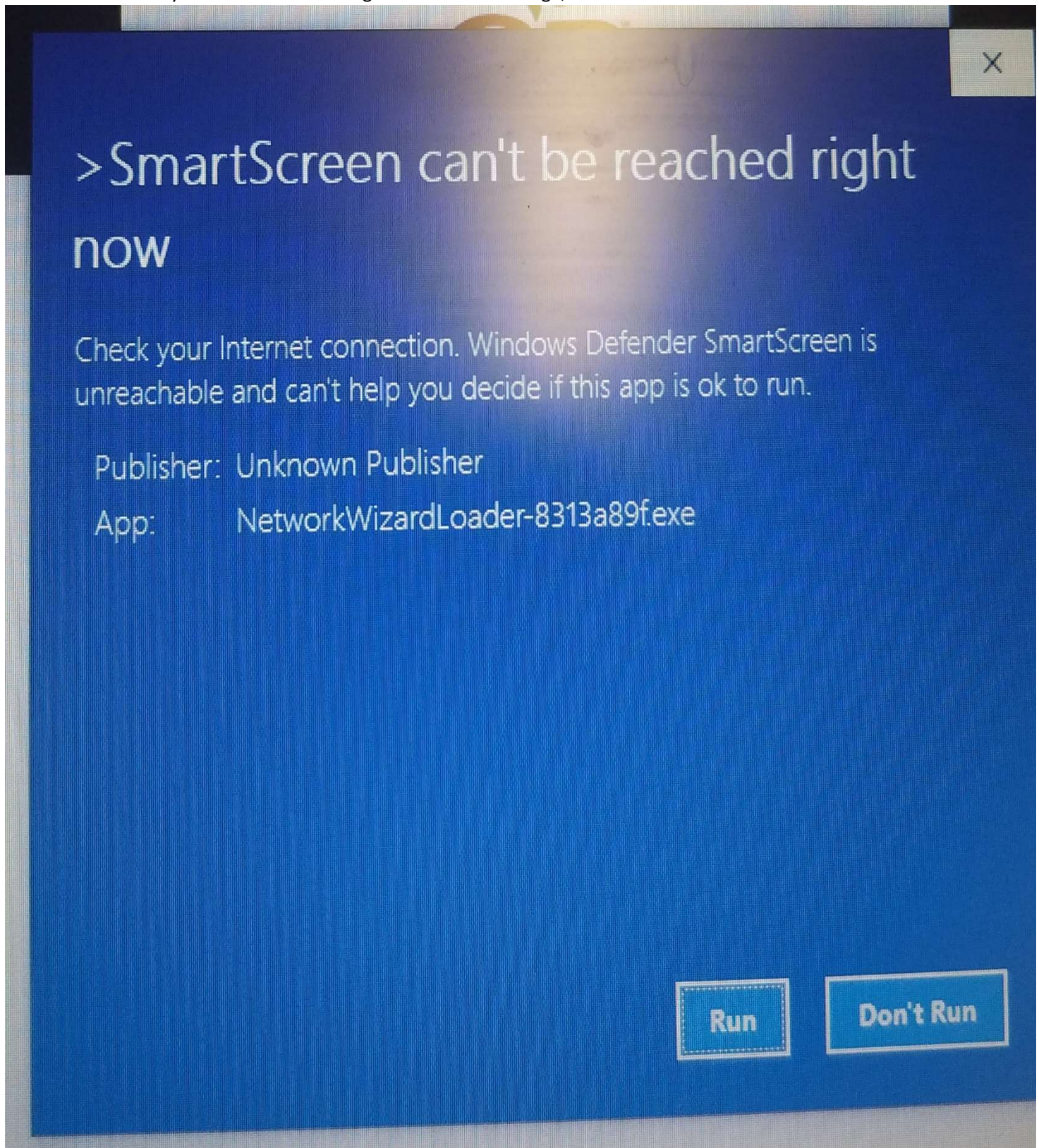


9. Click the “^” and select open



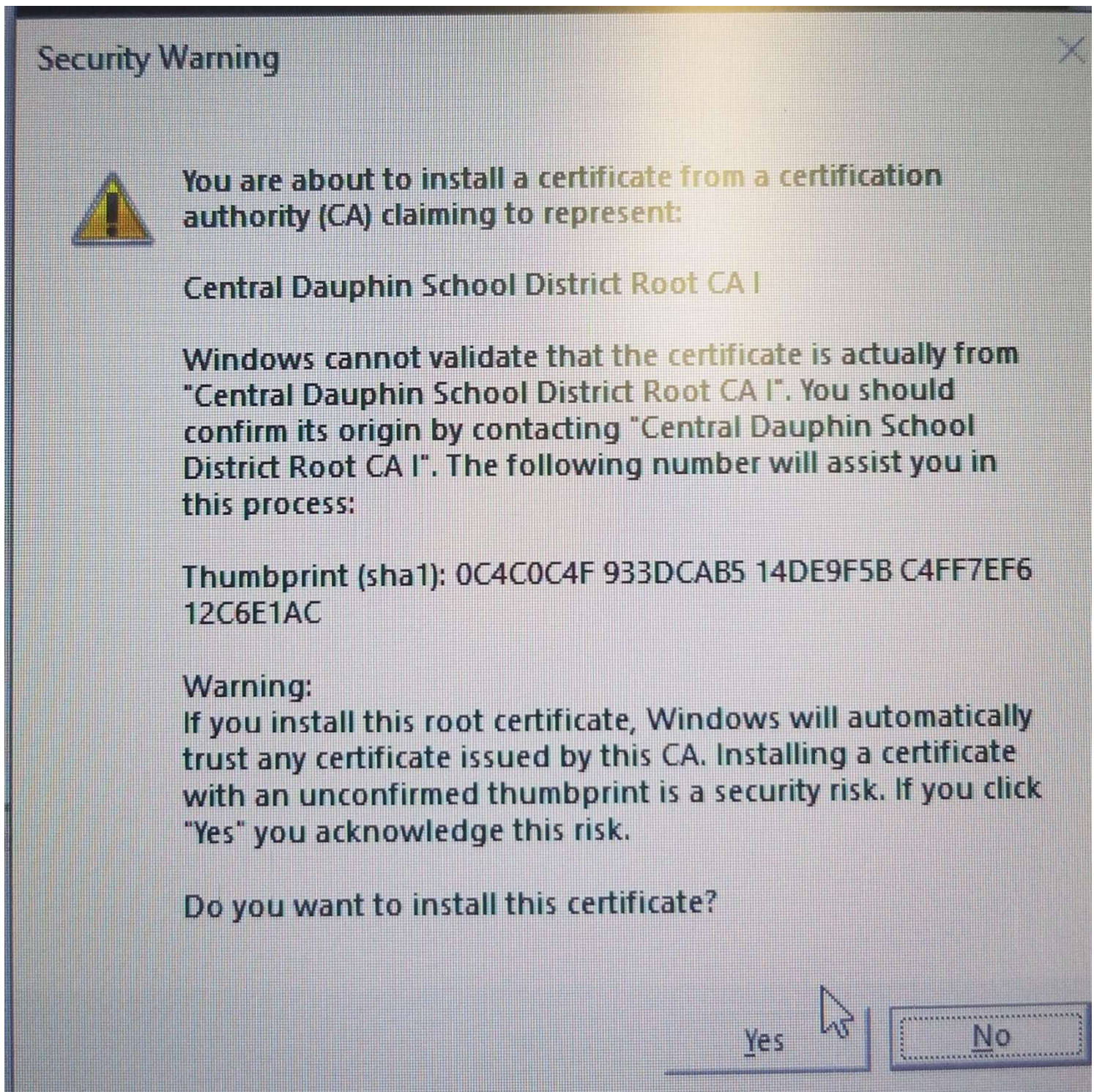


10. If you receive the following SmartScreen message, Click Run



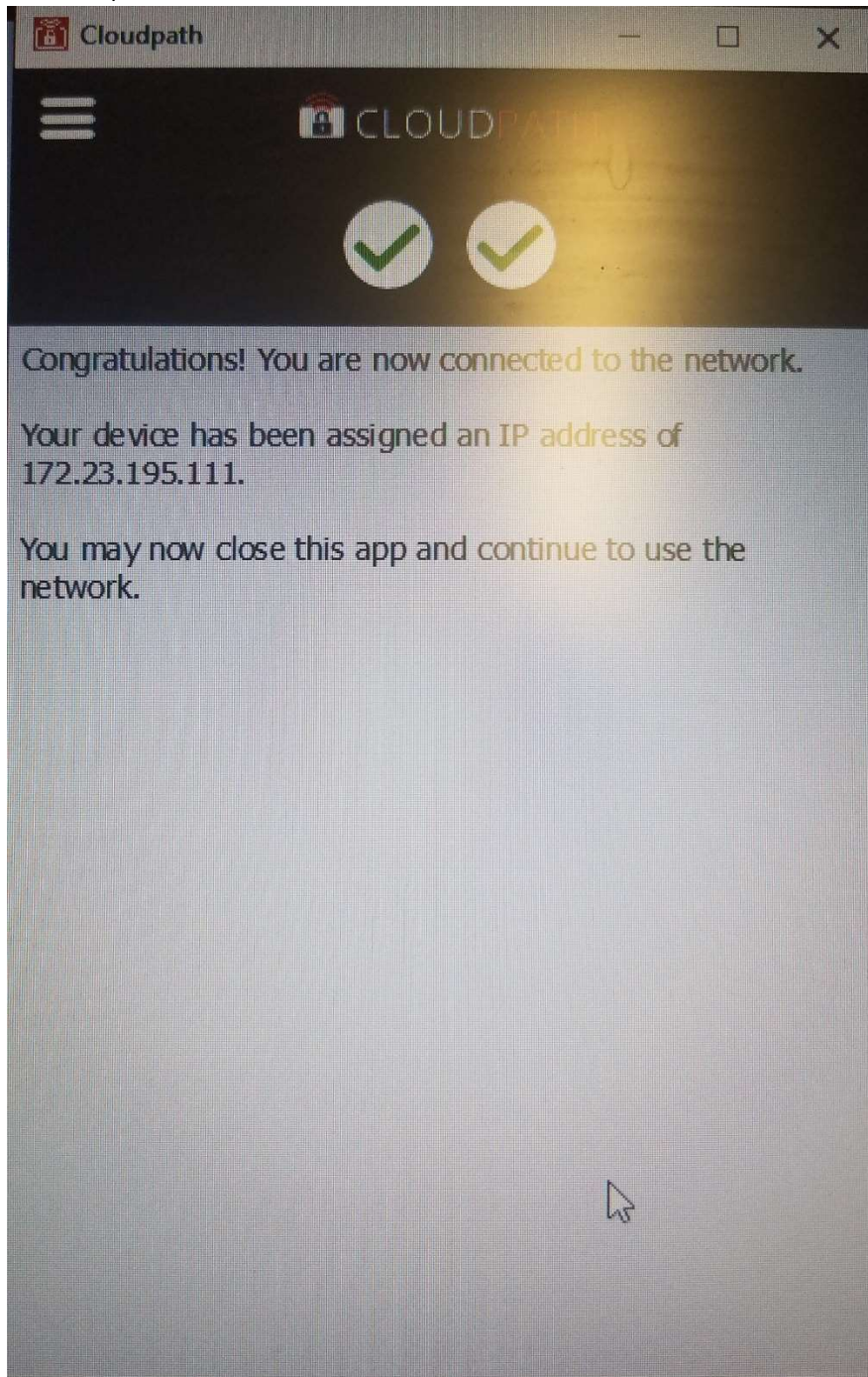


11. A download to your computer will start and Cloudpath will install. If you receive the following screen click yes





12. When completed successfully You will receive the following message (ip address will be different)



13. Check your WIFI connection. You should now be connected to CDS Secure. If you are not, please call the service desk for support.